

Schlumberger

VISION service

1:500 Measured Depth

Real Time Data

Company: Beach Petroleum

Well: Spikey Beach-1

Field:

Rig Name: Ocean Patriot

State: VIC

Country: Australia

Latitude: 40° 28' 53.9" S

Longitude: 145° 52' 24.71" E

Block:

Custom: 09ASSQ0029

Rig Name: Ocean Patriot

Rig Type: Semi Submersible

FL: T38/P

FL1:

FL2:

Log Measured From - Drill Floor: 21.5 m

Permanent Datum - Mean Sea Level



Ground Level: 74.0 m

Acquisition Dates: 11 Sep 09

Print Interval: 815.0(m) to 2051.8(m)

Index Types: Measured Depth

Index Scales: 1:500

Depth Source: Driller's Depth

Depth Sensor: DES

Conveyance: Drill Pipe

Print Type: Field

Spud Date: 07/09/09

Other Services:
Directional Surveys

Disclaimer

THE USE OF AND RELIANCE UPON THIS RECORDED-DATA BY THE HEREIN NAMED COMPANY (AND ANY OF ITS AFFILIATES, PARTNERS, REPRESENTATIVES, AGENTS, CONSULTANTS AND EMPLOYEES) IS SUBJECT TO THE TERMS AND CONDITIONS AGREED UPON BETWEEN SCHLUMBERGER AND THE COMPANY, INCLUDING: (a) RESTRICTIONS ON USE OF THE RECORDED-DATA; (b) DISCLAIMERS AND WAIVERS OF WARRANTIES AND REPRESENTATIONS REGARDING COMPANY'S USE AND RELIANCE UPON THE RECORDED-DATA; AND (c) CUSTOMER'S FULL AND SOLE RESPONSIBILITY FOR ANY INFERENCE DRAWN OR DECISION MADE IN CONNECTION WITH THE USE OF THIS RECORDED-DATA.

Contents

1. Header
2. Disclaimer
3. Contents
4. Run 2
 - 4.1 Software Version
 - 4.2 Pass Summary
 - 4.3 Log (Spikey Beach-1 RT Quad Combo)
 - 4.4 Parameter Listing
5. Tail

Run 2

Software Version

| | | | |
|---------------------------|---|--------------------------------|-------------------------|
| Acquisition System | | Version | |
| MaxWell | | 1.2.8706.0 | |
| Framework Patch | | FWK-BGC-20090709-1.2.8706.1016 | |
| Application Patch | | APL-BGC-DnM-1.2.8706.1021 | |
| Computation | Description | Version | |
| NEUTRON_PROC | Neutron Processing, ADN | 1.2.8706.0 | |
| ARC8GammaRayComputation | ARC8 Gamma Ray Computation Package for both Real-time and Recorded Mode | 1.2.8706.1021 | |
| ARCResistivity | ARC Resistivity Computation Package for ARC Tool Family | 1.2.8706.1021 | |
| Tool Elements | Description | Software Version | Firmware Version |
| ARDC | ARC 8.25 Inch Tool Drilling Collar | 1.2.8706.1021 | |
| DRILLING_SURFACE | DRILLING_SURFACE | 1.2.8706.1016 | |
| ADNP | Azimuth Neutron Detector Package | 1.2.8706.0 | 8.3 |

Pass Summary

| Run Name | Pass Objective | Direction | Top | Bottom | Acquisition Start Date | Acquisition Start Time |
|----------|----------------|-----------|----------|--------|------------------------|------------------------|
| Run 2 | Drilling | Down | 804.72 m | | 11-Sep-2009 | 01:32:19 |

All depths are referenced to toolstring zero

Log

Run 2: Drilling 52639CA3-504A-487B-8B69-8A76BC19CA9E

Description: ARC Dual Frequency 3-Log Resistivity Format: Log (Spikey Beach-1 RT Quad Combo) Index Scale: 1:500 Index Unit: m Index Type: Measured
 Depth Creation Date: 13-Sep-2009 06:31:17

| | | |
|---------|---------------------------|----------|
| A40H | ARC8:ARC8:ARDC | 6in - RT |
| ADIA | SADN8:SADN8 | 6in - RT |
| CRPM | TELE825:TELE825 | 6in - RT |
| DRHO_A | SADN8:SADN8 | 6in - RT |
| DTRA_DH | SONICVISION8:SONICVISION8 | 6in - RT |
| GR | ARC8:ARC8:ARDC | 6in - RT |
| P16H | ARC8:ARC8:ARDC | 6in - RT |
| P28H | ARC8:ARC8:ARDC | 6in - RT |
| P40H | ARC8:ARC8:ARDC | 6in - RT |
| PEF | SADN8:SADN8 | 6in - RT |
| RHOB_A | SADN8:SADN8 | 6in - RT |
| ROP5 | DRILLING_SURFACE | 6in - RT |
| STICK | TELE825:TELE825 | 6in - RT |
| TNPH | SADN8:SADN8:ADNP | 6in - RT |

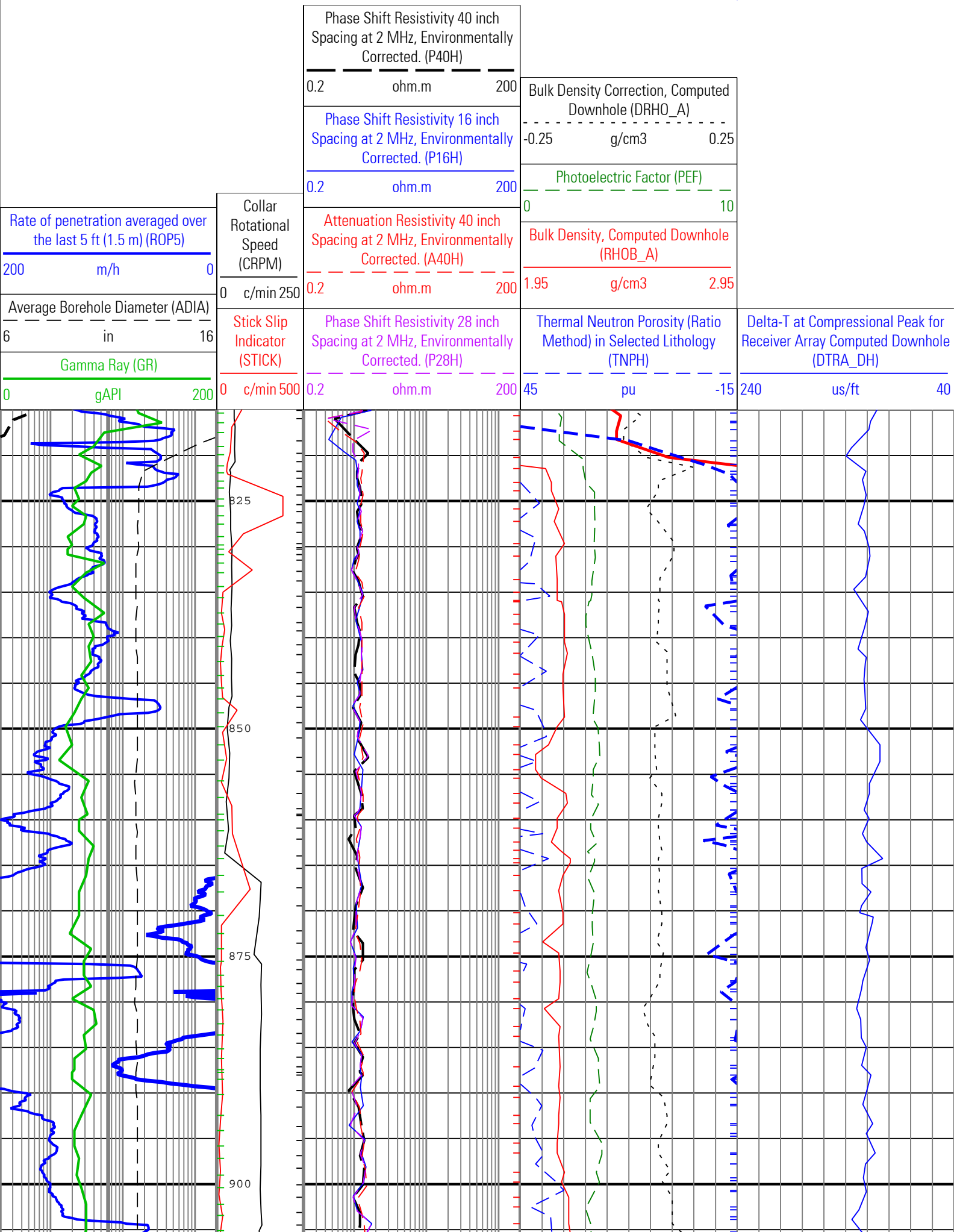
DTRA_DH - Delta-T at Compressional Peak for Receiver Array Computed Downhole

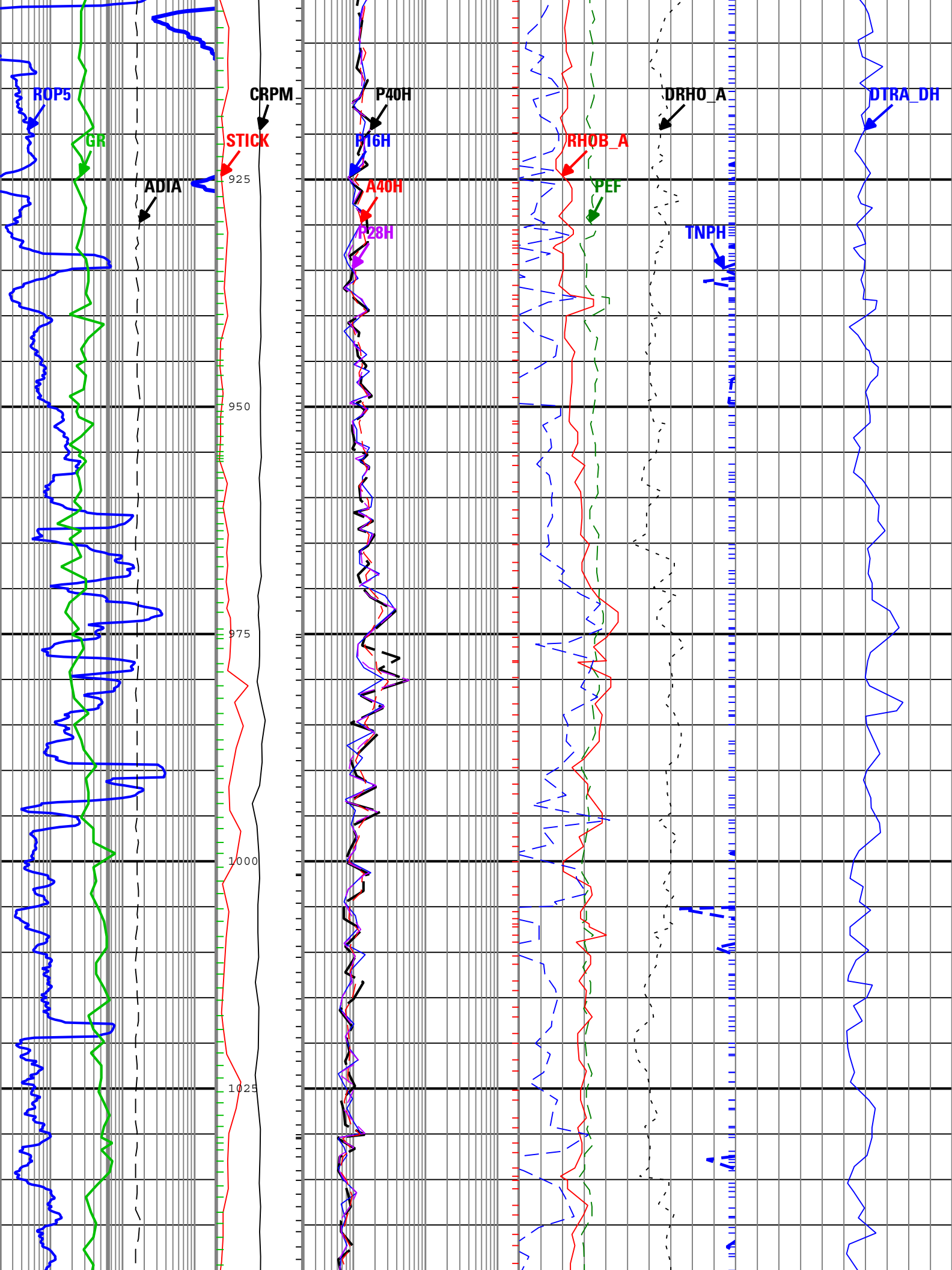
GR - Gamma Ray

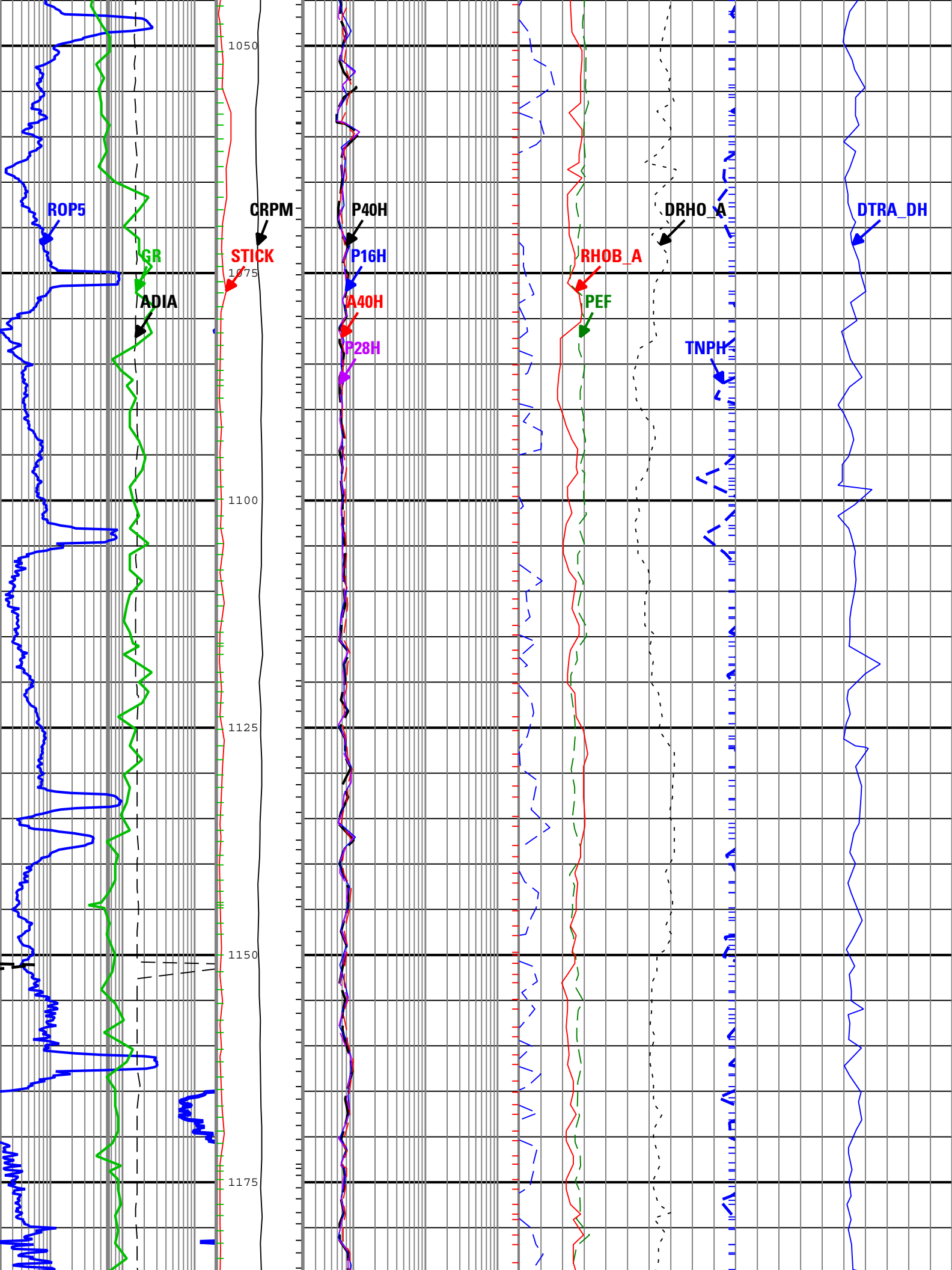
P40H - Phase Shift Resistivity 40 inch Spacing at 2 MHz, Environmentally Corrected.

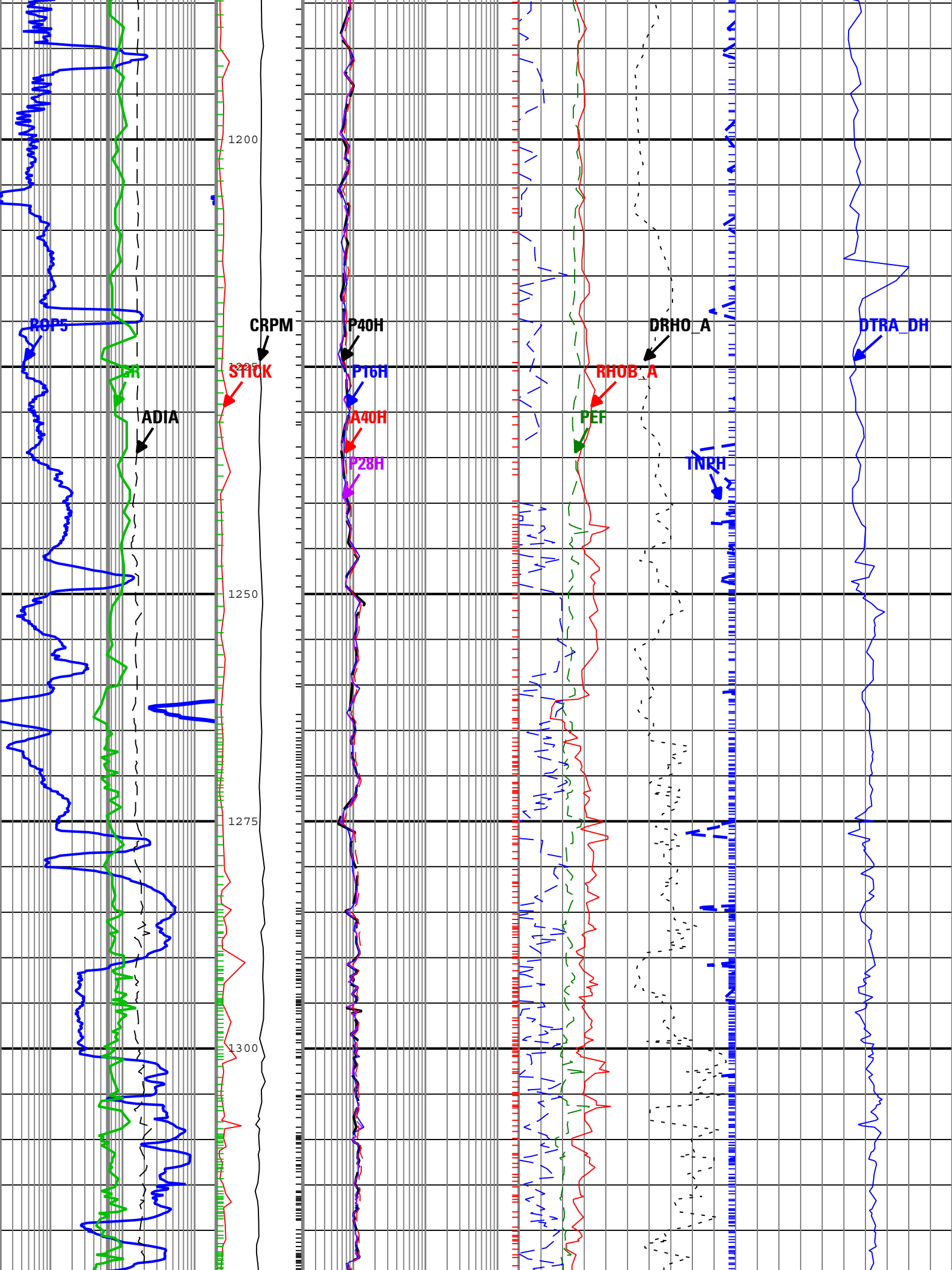
RHOB_A - Bulk Density Computed Downhole

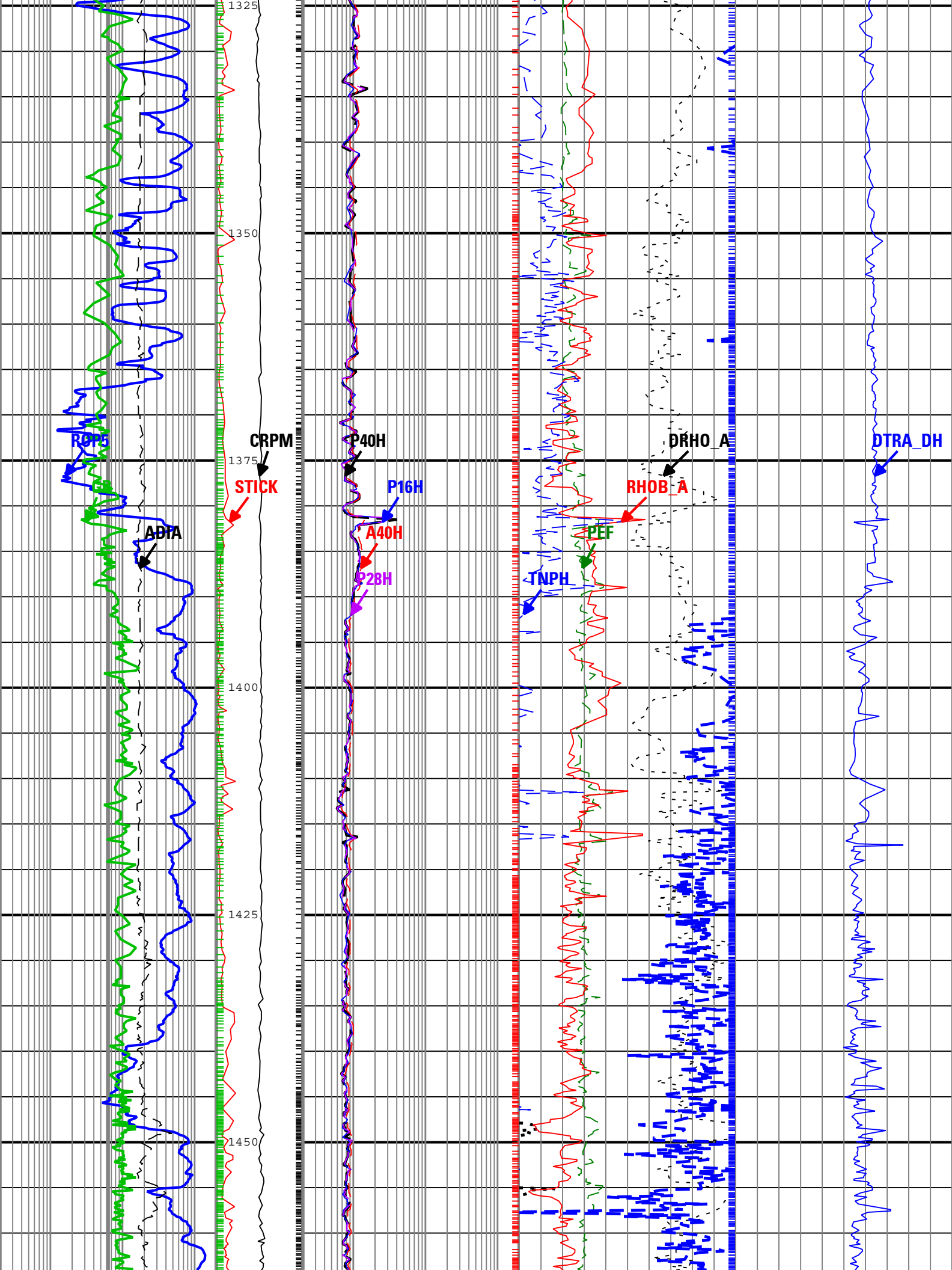
TNPH - Thermal Neutron Porosity (Ratio Method) in Selected Lithology

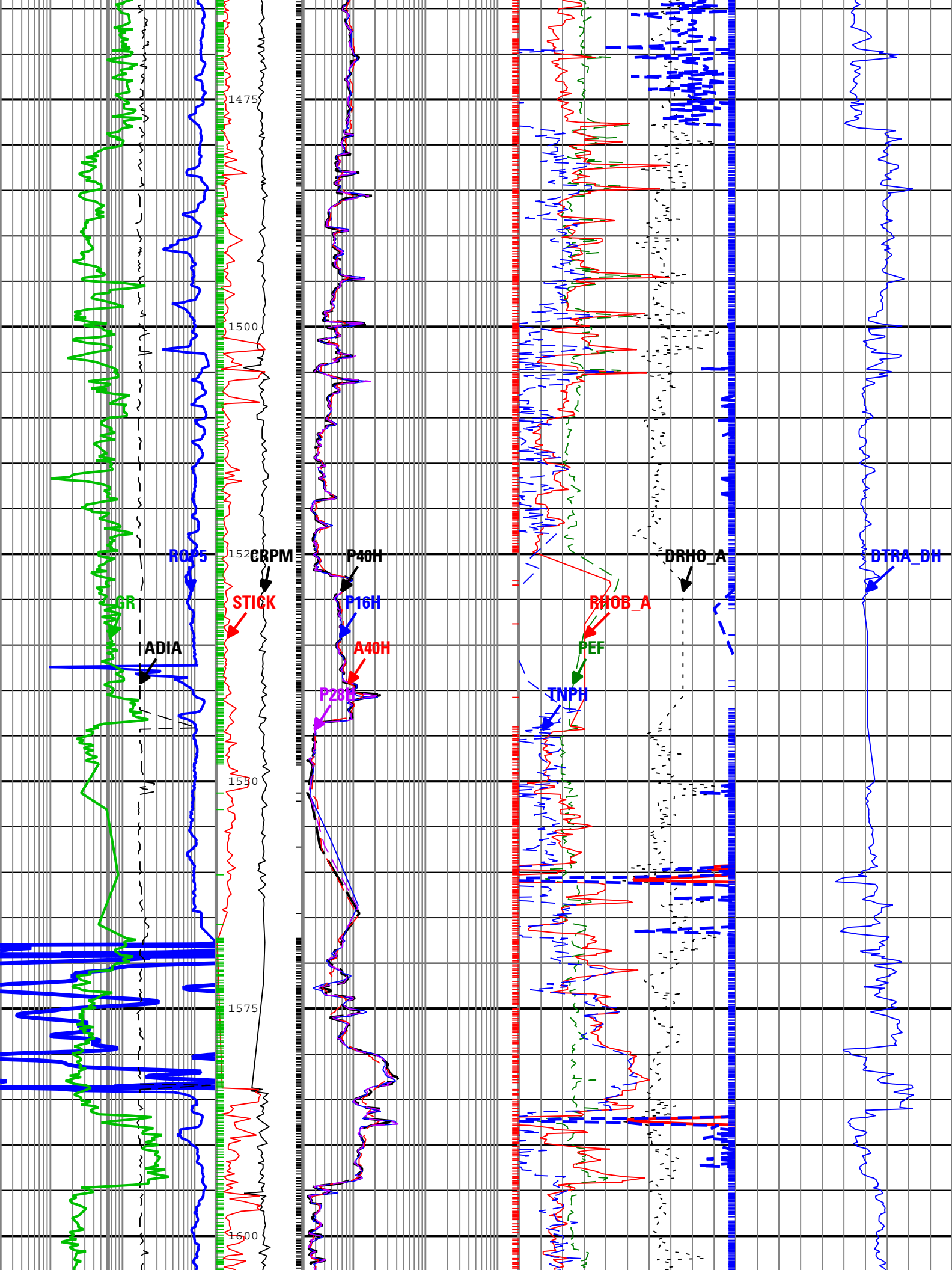


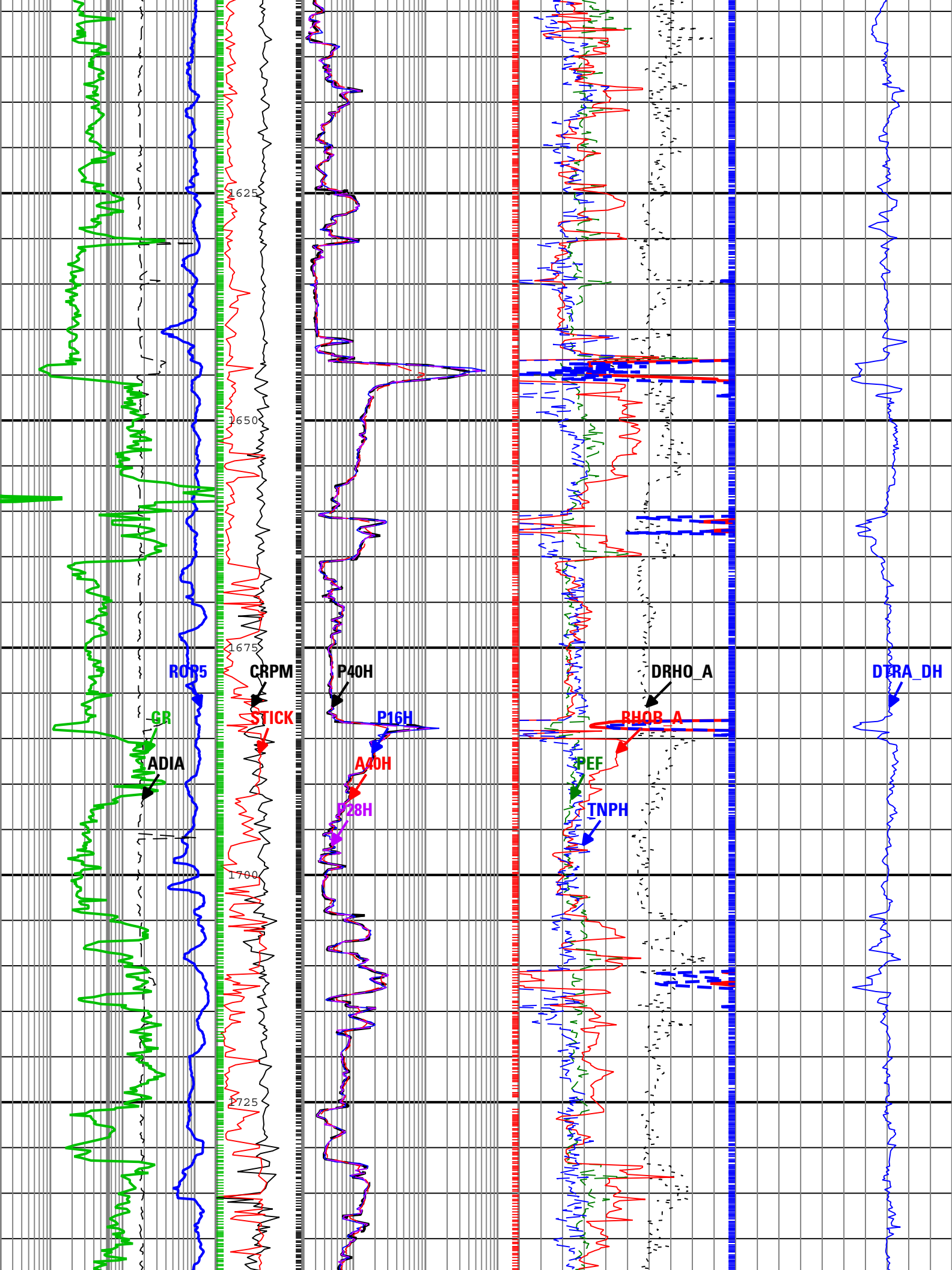


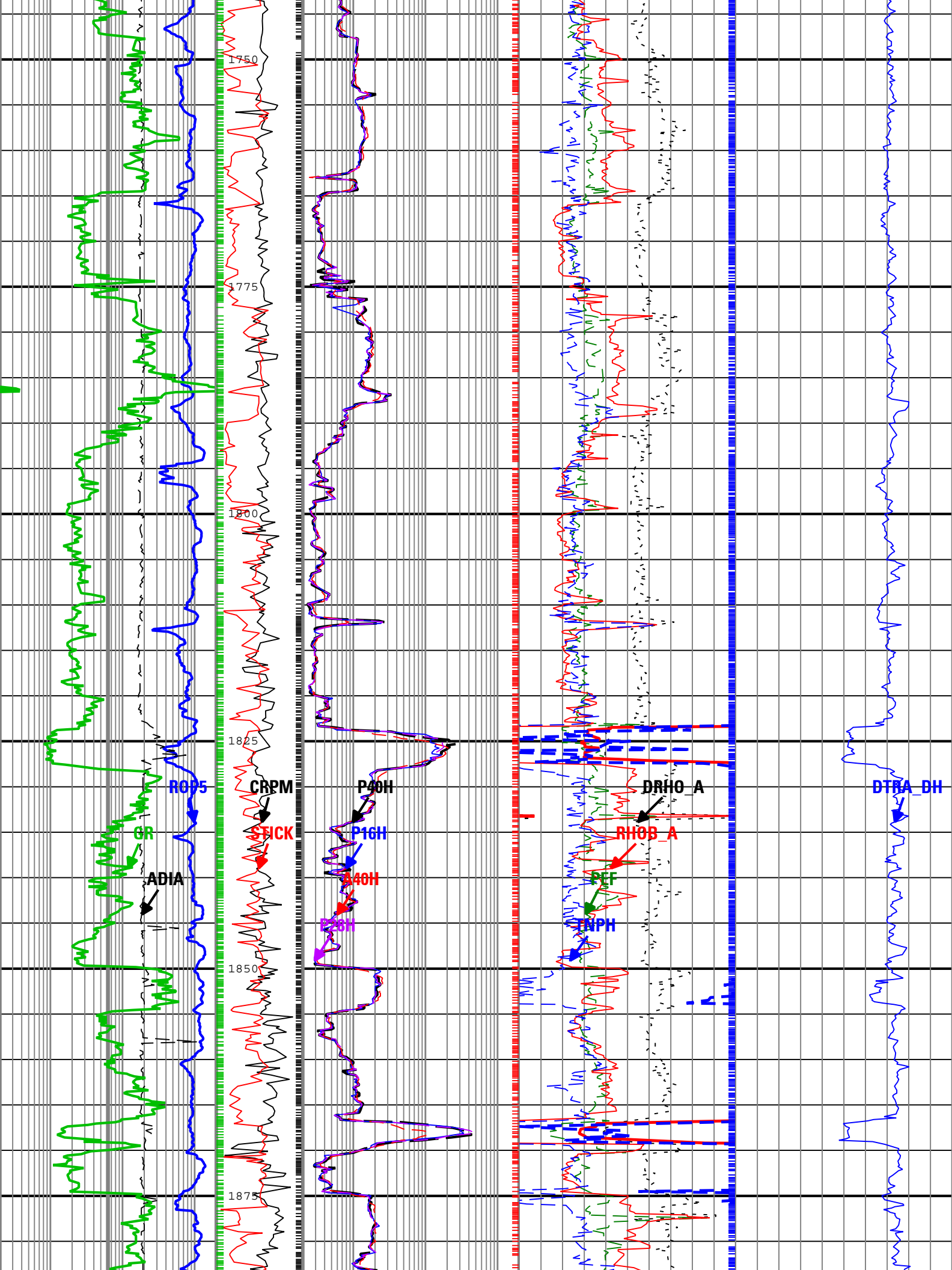


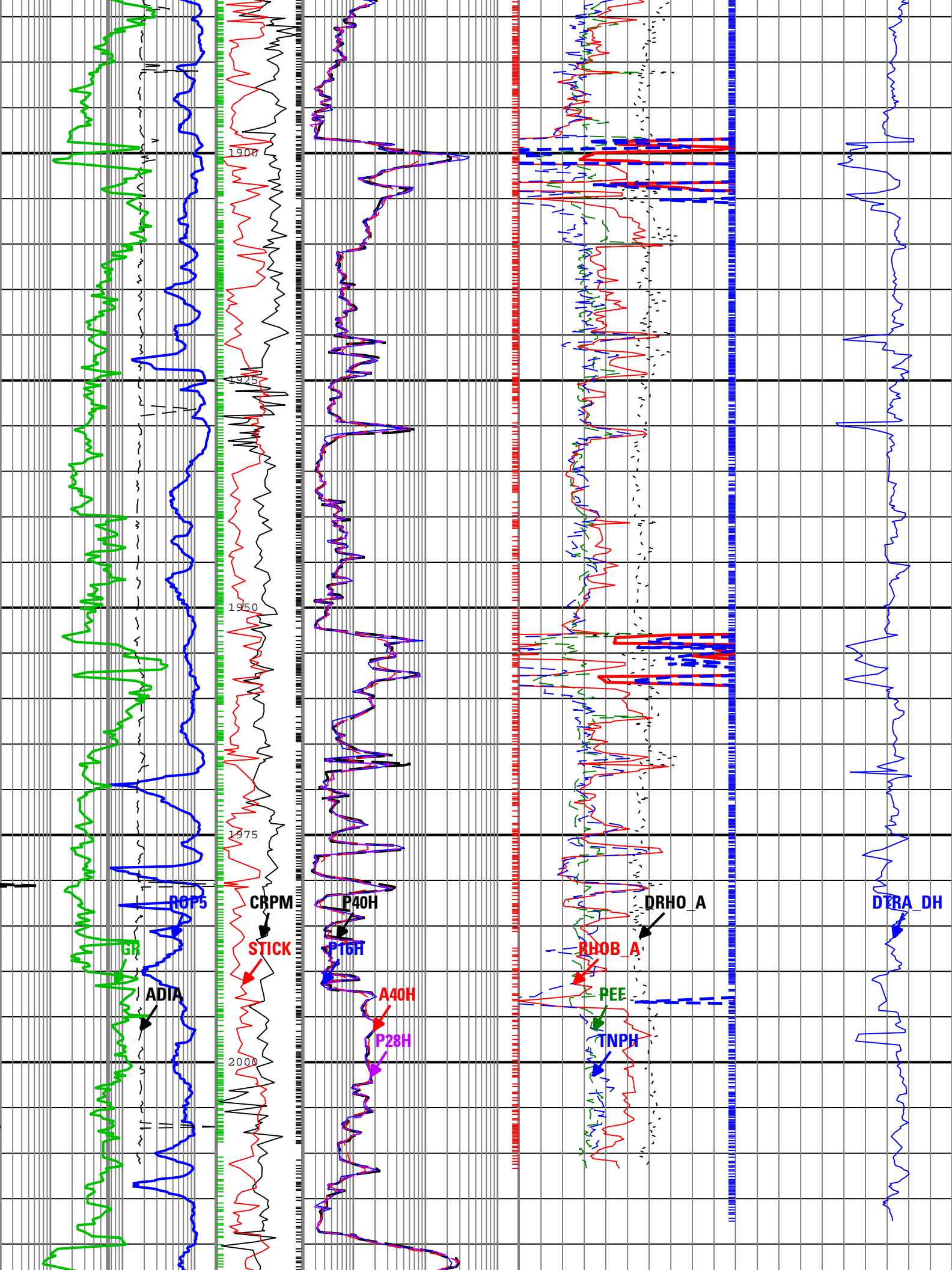


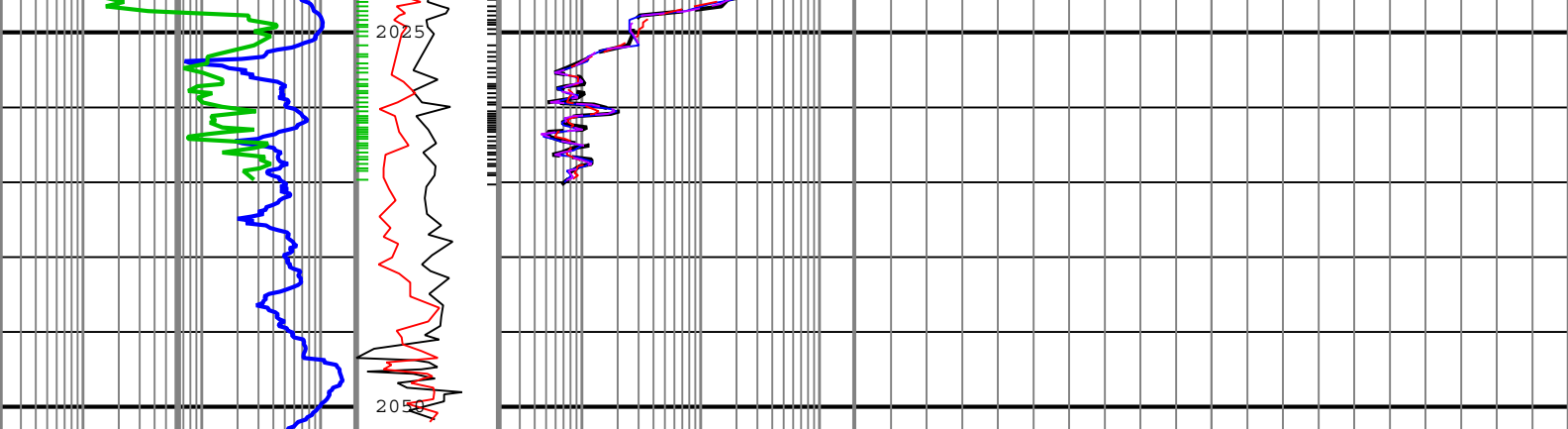












| | | | | |
|---|---|--|---|--|
| Rate of penetration averaged over the last 5 ft (1.5 m) (ROP5) 200 m/h 0 | Collar Rotational Speed (CRPM) 0 c/min 250 | Phase Shift Resistivity 40 inch Spacing at 2 MHz, Environmentally Corrected. (P40H) 0.2 ohm.m 200 | Bulk Density Correction, Computed Downhole (DRHO_A) -0.25 g/cm3 0.25 | Delta-T at Compressional Peak for Receiver Array Computed Downhole (DTRA_DH) 240 us/ft 40 |
| Average Borehole Diameter (ADIA) 6 in 16 | Stick Slip Indicator (STICK) 0 c/min 500 | Phase Shift Resistivity 16 inch Spacing at 2 MHz, Environmentally Corrected. (P16H) 0.2 ohm.m 200 | Photoelectric Factor (PEF) 0 10 | |
| Gamma Ray (GR) 0 gAPI 200 | | Attenuation Resistivity 40 inch Spacing at 2 MHz, Environmentally Corrected. (A40H) 0.2 ohm.m 200 | Bulk Density, Computed Downhole (RHOB_A) 1.95 g/cm3 2.95 | |
| | | Phase Shift Resistivity 28 inch Spacing at 2 MHz, Environmentally Corrected. (P28H) 0.2 ohm.m 200 | Thermal Neutron Porosity (Ratio Method) in Selected Lithology (TNPH) 45 pu -15 | |

TNPH - Thermal Neutron Porosity (Ratio Method) in Selected Lithology

RHOB_A - Bulk Density, Computed Downhole

P40H - Phase Shift Resistivity 40 inch Spacing at 2 MHz, Environmentally Corrected.

GR - Gamma Ray

DTRA_DH - Delta-T at Compressional Peak for Receiver Array Computed Downhole

Description: ARC Dual Frequency 3-Log Resistivity Format: Log (Spikey Beach-1 RT Quad Combo) Index Scale: 1:500 Index Unit: m Index Type: Measured Depth Creation Date: 13-Sep-2009 06:31:17

| Channel Processing Parameters | | | | |
|-------------------------------|--|------------|-----------------------|---------|
| Parameter | Description | ToolPath | Value | Unit |
| BHK | Drilling Fluid Potassium Concentration | Borehole | 0 | % |
| BHT | Bottom Hole Temperature | Borehole | 65 | degC |
| BS | Bit Size | COMPLETION | Depth Zoned | in |
| BSAL | Borehole Salinity | Borehole | Time Zoned | ppm |
| DFD | Drilling Fluid Density | Borehole | Time Zoned | lbm/gal |
| DFT | Drilling Fluid Type | Borehole | Water | |
| GGRD | Geothermal Gradient | Borehole | 18.23 | degC/km |
| GRSE | Generalized Mud Resistivity Selection | Borehole | Computed (GEN-9) | |
| GTSE | Generalized Temperature Selection | Borehole | Gradient From Surface | |
| MATR | Rock Matrix for Neutron Porosity Corrections | Borehole | LIMESTONE | |
| MST | Mud Sample Temperature | Borehole | Time Zoned | degC |
| RMS | Resistivity of Mud Sample | Borehole | Time Zoned | ohm.m |
| SHT | Surface Hole Temperature | Borehole | 15 | degC |

Depth Zone Parameters

Depth Zone Parameters

| Parameter | Value | Start (m) | Stop (m) |
|-----------|-------|-------------|------------|
| BS | 17.5 | 815 | 816.61 |
| BS | 12.25 | 816.61 | |

All depth are actual.

Time Zone Parameters

| Parameter | Value | Start Time | Stop Time | Start Depth (m) | Stop Depth (m) |
|-----------|-----------|----------------------|----------------------|-------------------|------------------|
| BSAL | 117818.22 | 11-Sep-2009 01:32:19 | 11-Sep-2009 19:28:28 | 804.72 | 1428.19 |
| BSAL | 102066.07 | 11-Sep-2009 19:28:28 | 12-Sep-2009 19:30:04 | 1428.19 | 1851.41 |
| BSAL | 106999.52 | 12-Sep-2009 19:30:04 | 12-Sep-2009 22:53:04 | 1851.41 | 1895.78 |
| BSAL | 98242.83 | 12-Sep-2009 22:53:04 | | 1895.78 | |
| DFD | 9 | 11-Sep-2009 01:32:19 | 13-Sep-2009 02:10:57 | 804.72 | 1949.3 |
| DFD | 9.5 | 13-Sep-2009 02:10:57 | | 1949.3 | |
| MST | 17.9 | 11-Sep-2009 01:32:19 | 11-Sep-2009 19:28:28 | 804.72 | 1428.19 |
| MST | 20.9 | 11-Sep-2009 19:28:28 | 12-Sep-2009 19:30:04 | 1428.19 | 1851.41 |
| MST | 22.4 | 12-Sep-2009 19:30:04 | | 1851.41 | |
| RMS | 0.07 | 11-Sep-2009 01:32:19 | 11-Sep-2009 19:28:28 | 804.72 | 1428.19 |
| RMS | 0.08 | 11-Sep-2009 19:28:28 | 12-Sep-2009 19:30:04 | 1428.19 | 1851.41 |
| RMS | 0.07 | 12-Sep-2009 19:30:04 | | 1851.41 | |

All depth are at tool zero.

Tool Control Parameters

| Parameter | Description | ToolPath | Value | Unit |
|-----------|--|-------------|-------|------|
| OFFBTM_TH | Threshold for deciding whether the bit is off bottom | DnMWorkflow | 0.4 | m |

Company: Beach Petroleum

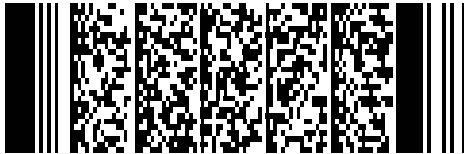
Well: Spikey Beach-1

Field:

Rig Name: Ocean Patriot

State: VIC

Country: Australia



Schlumberger VISION service
1:500 Measured Depth
Real Time Data